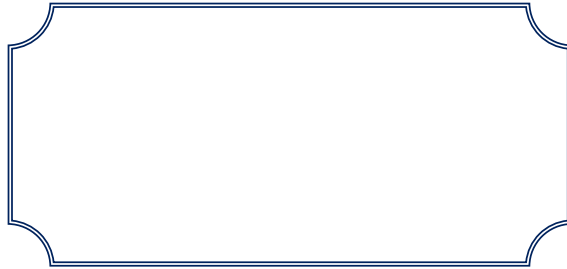


If you'd like to receive this newsletter electronically please email: warren@leahylandscaping.com



www.leahylandscaping.com
781.581.3489
Leahy Landscaping, Inc.
56 Sanderson Avenue
Lynn, MA 01902



Property Pick:

Leahy Landscaping, Inc. designed and implemented the landscape for this Marblehead, Mass. property that features fieldstone steps to the back garden and a planted slope to define the front from the boundary between the front and side.



Leahy Landscaping, Inc.

Vol.0706

Leahy Leaflet

Fall 2006

GREEN SPACES are not just another pretty sight. They have proven benefits to the environment and economy of our communities and businesses and they contribute to an improved lifestyle in numerous ways. For example, psychologists found that access to plants and green spaces during the work day provides a sense of rest that helps workers increase productivity. Beautiful green spaces contribute to community pride and provide a positive perception of an area, bringing customers to a business.

At home, green spaces contribute to a host of positive behaviors. A University of Illinois study found that girls exposed to green settings are better able to handle peer pressure and other challenging situations. Exposure to green spaces also promotes improved academic performance for children, increased self esteem, improvements in attention and effective thinking and coping skills. Plants lower blood pressure and reduce muscle tension related to stress.

The environment also reaps the benefits of green spaces. These spaces help to regulate air quality and climate and reduce energy consumption by countering the warming effects of paved surfaces, recharging ground water supplies and protecting streams and lakes from polluted runoff. Trees, shrubs and turf remove smoke, dust and other pollutants from the air. For example, in one year, a single tree can remove 11,000 miles of car emissions.

INSIDE:

- ❖ How Green Spaces Increase Productivity
- ❖ Soil Moisture Sensing
- ❖ Property Pick

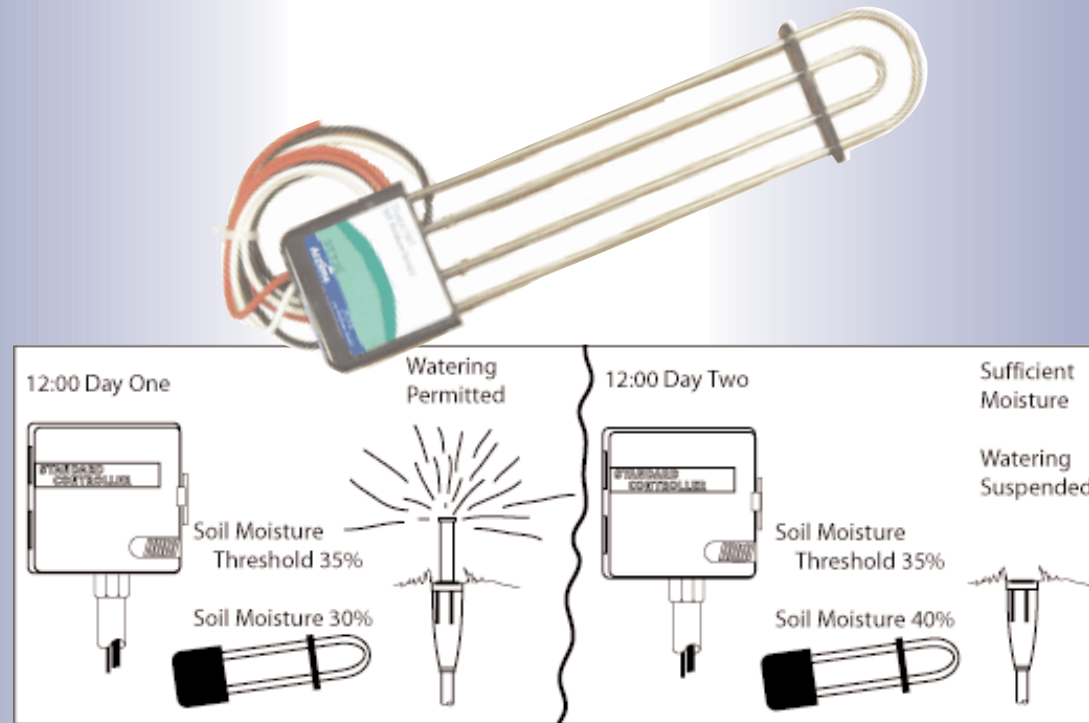


SOIL MOISTURE SENSING

Conserve water by 35 to 50 percent with the latest in irrigation technology. For the past 30 years, there have been many attempts to control irrigation systems with the use of moisture sensors that are placed into the soil. Most attempts were neglected due to inaccurate readings caused by the differences in temperatures, chemistry and compaction of the soil.

Now there is an accurate process. Previously available only to soil laboratories, analog time domain transmissometry (TDT) is now available to you. This process is accurate, but requires state-of-the-art equipment and an experienced operator to gather the soil moisture content. Leahy Landscaping, Inc. has the equipment and expertise to make best use of this advanced Acclima technology to produce turf irrigation with sensors. The result is an accurate soil moisture content by volume, regardless of changing soil type, chemistry, temperature and compaction. Call us to see how this new technology can help your property.

It Makes SENSE



40 percent less water while maintaining a healthy landscape.

Sensor accuracy and reliability have been independently verified for the past two irrigation seasons by the Center for Irrigation Technology, University of California at Fresno.

This new system reads absolute soil moisture to within – 1 percent.

WHAT'S THE ADVANTAGE?

Water Savings

- All weather, soil and plant characteristics are taken into accurate account
- System monitors the level of evaporation in the root zone and applies just the right amount of water to hold moisture in the target range
- More than 30 percent water savings can be expected over a well-managed clock-based system

Maintenance Savings

- Seasonal clock adjustments are eliminated
- System automatically accommodates heavy rains, cool periods, hot periods and dry winds without need of adjustment.
- Initial settings remain stable year after year

Healthier Lawns

- Over-watering drives oxygen out of the soil and putrefies roots
- Over-watering leaches nutrients and pesticides from the soil
- Over-watering develops fungi in the soil
- Over-watering weakens drought tolerance and reinforces over-watering
- Under-watering stresses lawns and promotes weed growth

Environmental Issues

- Ground water contamination with pesticides and fertilizers is the result of over-watering crops and turf.
- Enormous reductions in fertilizer and pesticide applications are possible with precision irrigation.